

SPARE PARTS SECTION

SWIVEL HEAD METAL BAND SAW

Model. BS-5S

Order Code B003

Edition No : BS-5S-1

Date of Issue : 10/2020

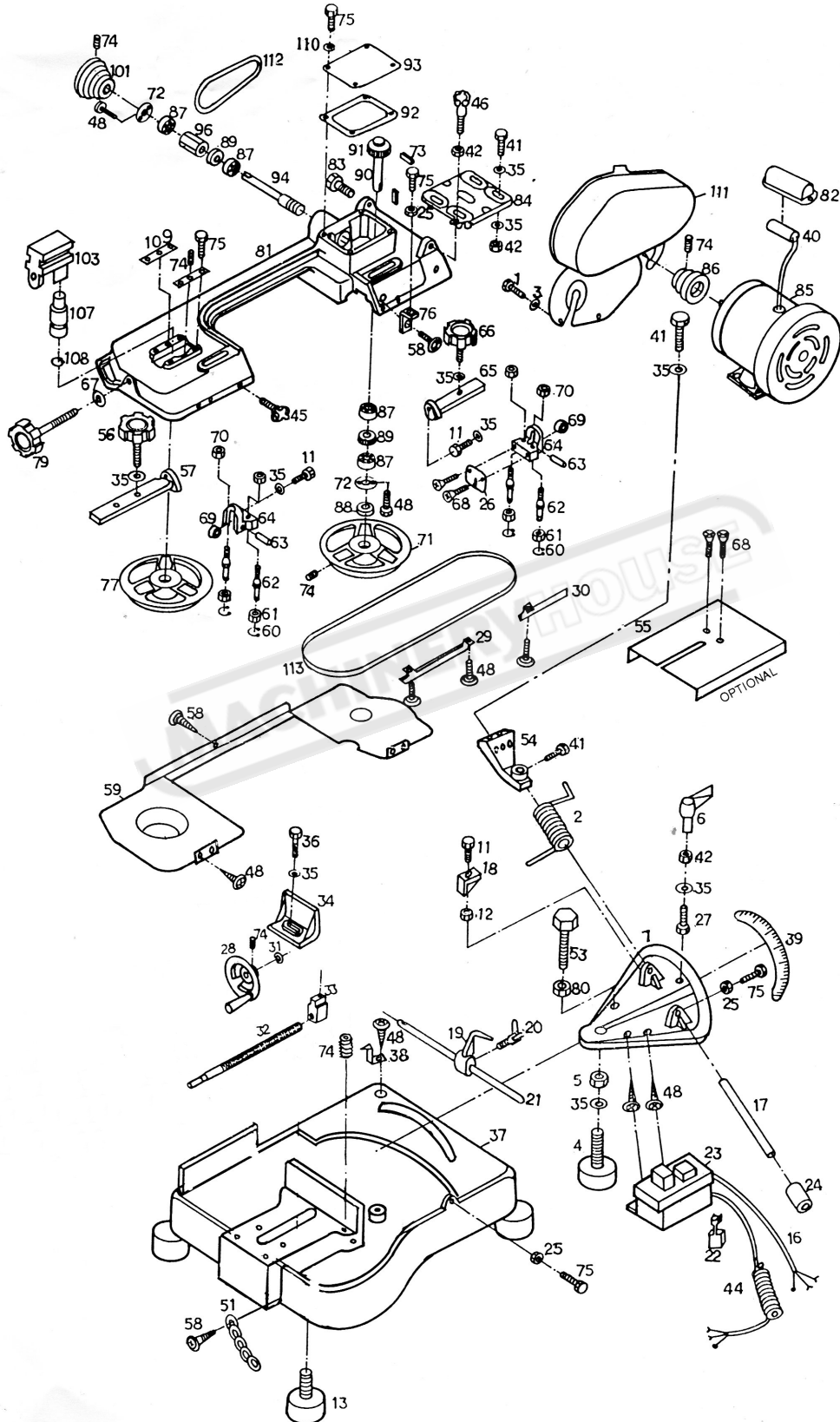
The following section covers the spare parts diagrams and lists that were current at the time this manual was originally printed. Due to continuous improvements of the machine, changes may be made at any time without notification.

HOW TO ORDER SPARE PARTS

NOTE: SOME INDIVIDUAL PARTS MAY ONLY BE AVAILABLE AS AN ASSEMBLY

1. Have your machines **model number, serial number & date of manufacture** on hand, these can be found on the specification plate mounted on the machine
2. A scanned copy of your parts list/diagram with required spare part/s identified
3. Go to www.machineryhouse.com.au/contactus and fill out the inquiry form attaching a copy of scanned parts list.

BS-5S PARTS DIAGRAM



BS-5S SPARE PARTS LIST

ITEM	DESCRIPTION	QTY.	ITEM	DESCRIPTION	QTY.
1	HEX. HEAD SCREW	2	58	SCREW	3
2	SPRING	1	59	BLADE COVER	1
3	WASHER	2	60	C-RING	4
4	BOLT, (MITER PLATE)	1	61	BEARING	4
5	NUT	1	62	GUIDE PIVOT	4
6	FIXING LEVER	1	63	BEARING SHAFT PIN	2
7	MITER PLATE	1	64	BLADE SEAT	2
11	HEX. HEAD SCREW	3	65	BLADE GUIDE BRACKET, R	1
12	HEX.NUT	1	66	BRACKET LOCK, R	1
13	PAD, (BASE)	4	67	WASHER	1
16	ELECTRIC CABLE	1	68	SCREW	2
17	ROD	1	69	BEARING (608)	2
18	SUPPORT PLATE	1	70	HEX,NUT	4
19	STOCK STOP	1	71	DRIVE BLADE WHEEL	1
20	THUMB SCREW	1	72	BEARING COVER	1
21	ROD, STOCK STOP	1	73	KEY	2
22	WIRE RELIEF RETAINER	3	74	HEX. SET SCREW	6
23	SWITCH	1	75	HEX. HEAD SCREW	11
24	BUSHING	1	76	SWITCH CUT OFF TIP	1
25	HEX.NUT	1	77	IDLE BLADE WHEEL	1
26	BLADE GUARD	1	78	HEX. HEAD SCREW	4
27	HEX. HEAD SCREW	1	79	TENSION KNOB	1
28	HAND WHEEL	1	80	HEX. NUT	1
29	BLADE COVER, L	1	81	BODY FRAME	1
30	BLADE COVER, R	1	82	CONDENSER COVER	1
31	C-RING	1	83	SET SCREW	2
32	LEAD SCREW	1	84	MOTOR PLATE	1
33	WISE NUT	1	85	MOTOR	1
34	CLAMPING PLATE, VISE	1	86	MOTOR PULLEY	1
35	WASHER	15	87	BALL BEARING (6202Z)	4
36	HEX. HEAD SCREW	1	88	BUSHING	1
37	BASE	1	89	OIL SEAL	2
38	ANGLE POINTER	1	90	TRANSMISSION GEAR SHAFT	1
39	SCALE	1	91	TRANSMISSION GEAR	1
40	CONDENSER, (MOTOR)	1	92	GASKET, GEAR BOX	1
41	HEX. HEAD SCREW	1	93	GEAR BOX COVER	1
42	HEX.NUT	5	94	WORM GEAR	1
44	ELECTRICAL CABLE	1	96	BUSHING	1
45	KNOB	1	101	GEAR PULLEY	1
46	KNOB	1	103	BLOCK, BLADE TENSION	1
48	SET SCREW	13	107	WHEEL SHAFT	1
49	WISE BASE	1	108	C-RING	1
51	LOCKING CHAIN	1	109	TRACKING PLATE	2
53	HEX. HEAD SCREW	1	110	SPRING WASHER	4
54	ARM	1	111	PULLEY CASE	1
55	VERTICAL CUTTING TABLE	1	112	V- BELT (A22)	1
56	BRACKET LOCK, L	1	113	SAW BLADE	1
57	BLADE GUIDE BRACKET, L	1	114	QUICK GRIP VISE	1

NOTE: SOME INDIVIDUAL PARTS MAY ONLY BE AVAILABLE AS AN ASSEMBLY